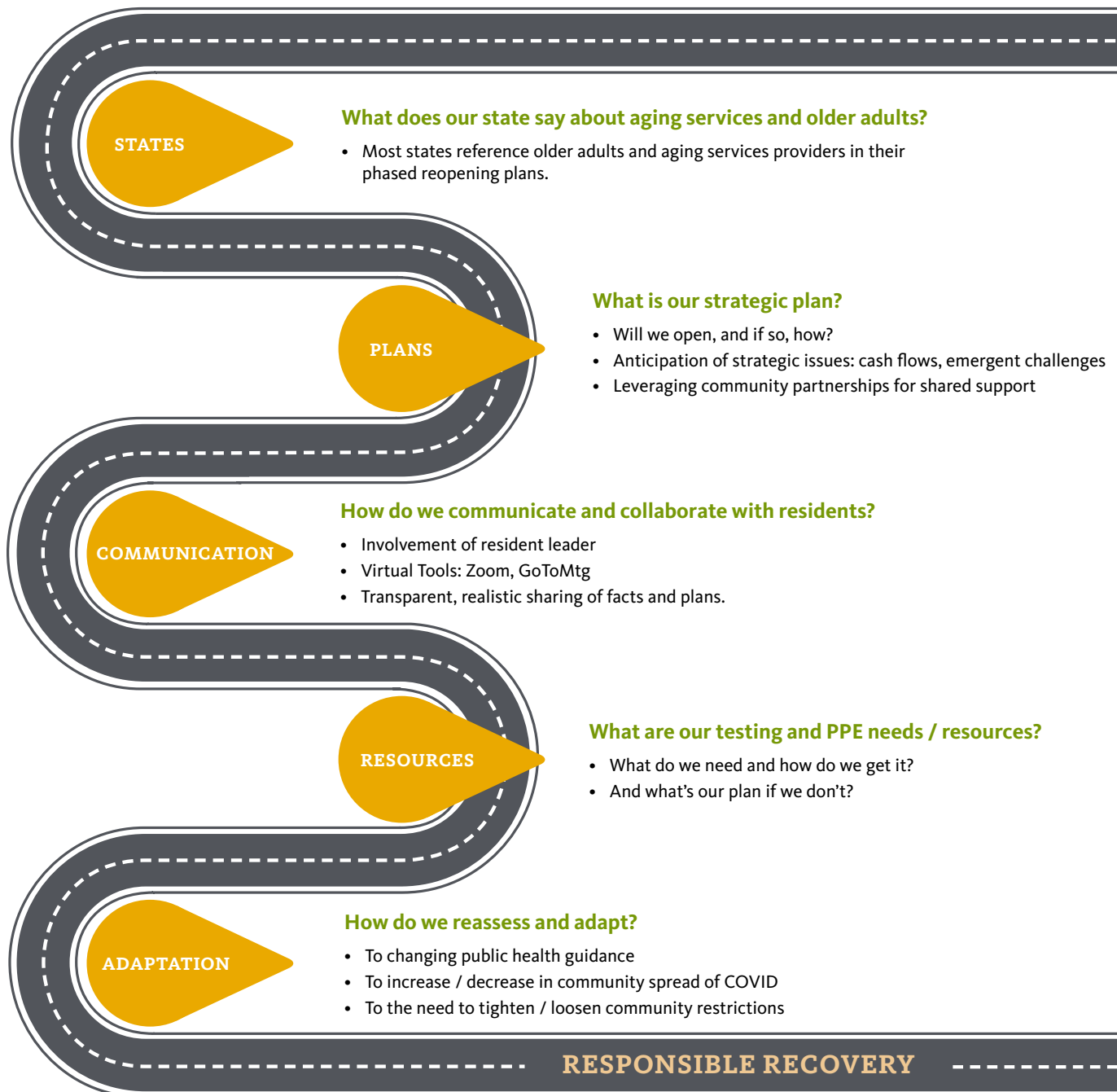


# RECOVERY CONSIDERATIONS FOR LIFE PLAN COMMUNITIES

## THE ROAD AHEAD

As Life Plan Communities adapt to the Coronavirus crisis, here are some key points to consider.



# RECOVERY CONSIDERATIONS FOR LIFE PLAN COMMUNITIES

## OPENING CAMPUS AMENITIES

	Operational Issues	Federal / State Guidance	Considerations for Employers
Dining Rooms	<ul style="list-style-type: none"> <li>• Infection control for high touch surfaces</li> <li>• Space for social distancing of tables / service areas</li> <li>• Reservation / seating times for meals</li> <li>• Enhanced meal &amp; grocery delivery</li> <li>• Phased reopening of Dining Room</li> <li>• Virtual events: cooking, happy hours, etc.</li> </ul>	<ul style="list-style-type: none"> <li>• CDC <a href="#">restaurant reopening decision tool</a></li> <li>• US FDA <a href="#">best food service practices during COVID-19</a></li> <li>• CDC <a href="#">guidance for food / grocery delivery staff</a></li> <li>• Most states have reopening guidelines for food service operators, restaurants and take-away meal services in their <a href="#">state reopening plans</a>.</li> <li>• CDC <a href="#">general guidance, disinfecting workplaces</a></li> </ul>	<ul style="list-style-type: none"> <li>• Proper PPE and hand hygiene for staff</li> <li>• Disinfection protocol and adequate supplies between meal service times</li> <li>• Masks / PPE for residents during meals</li> <li>• Staff coverage for services and deliveries</li> <li>• OSHA <a href="#">preparing workplaces for COVID</a></li> </ul>
Chapel, Pool & Fitness	<ul style="list-style-type: none"> <li>• Infection control for high touch surfaces</li> <li>• Scheduled appointments for resident use.</li> <li>• Screening water fountains for Legionnaires' disease</li> <li>• Socially distanced seating</li> <li>• Communion &amp; infection control</li> </ul>	<ul style="list-style-type: none"> <li>• CDC <a href="#">considerations for public pools</a></li> <li>• CDC <a href="#">guidance for faith leadership &amp; practice</a></li> <li>• Most states have reopening guidelines for places of worship, pools, gyms, and aquatics and fitness centers in their <a href="#">state reopening plans</a>.</li> </ul>	<ul style="list-style-type: none"> <li>• Scheduling of staff for cleaning / disinfection.</li> <li>• Access / support from contract services: lifeguards, instructors, equipment rentals</li> <li>• Proper PPE and hand hygiene for staff</li> <li>• OSHA <a href="#">preparing workplaces for COVID</a></li> </ul>
Spas & Hair Salons	<ul style="list-style-type: none"> <li>• Infection control for high touch surfaces</li> <li>• Space for social distancing of stations / clients</li> <li>• Enhanced operational requirements by states</li> <li>• Salons on higher levels of care: should we open?</li> </ul>	<ul style="list-style-type: none"> <li>• Most states have reopening guidelines for hair salons, barbershops, spas, massage therapy, and other close-contact personal services in their <a href="#">state reopening plans</a>.</li> </ul>	<ul style="list-style-type: none"> <li>• Enhanced cosmetology service requirements in some states.</li> <li>• Revenue / expense trade-offs</li> <li>• Proper PPE and hand hygiene for staff</li> <li>• OSHA <a href="#">preparing workplaces for COVID</a></li> </ul>
Outdoor Trips & Spaces	<ul style="list-style-type: none"> <li>• Space for social distancing</li> <li>• Scheduled appointments for gardens, small group gatherings, exercise classes, culinary events</li> <li>• Bus trips to select, safe locations; PPE and social distancing for duration of trip.</li> </ul>	<ul style="list-style-type: none"> <li>• CDC <a href="#">considerations for parks / recreational facilities</a></li> <li>• CDC <a href="#">guidance for disinfecting non-emergency vehicles</a></li> </ul>	<ul style="list-style-type: none"> <li>• Adequate staffing for higher volume of small group classes / events</li> <li>• Safety considerations for outdoor exercise — residents and staff.</li> <li>• Proper PPE for staff and residents</li> <li>• OSHA <a href="#">preparing workplaces for COVID</a></li> </ul>

# RECOVERY CONSIDERATIONS FOR LIFE PLAN COMMUNITIES

## ENTERING & EXITING CAMPUS

Managing the delicate balance of resident autonomy and community safety presents a philosophical and operational challenge for Life Plan Communities.

Here are some solutions members are implementing to find a reasonable compromise and protect the people we serve.

